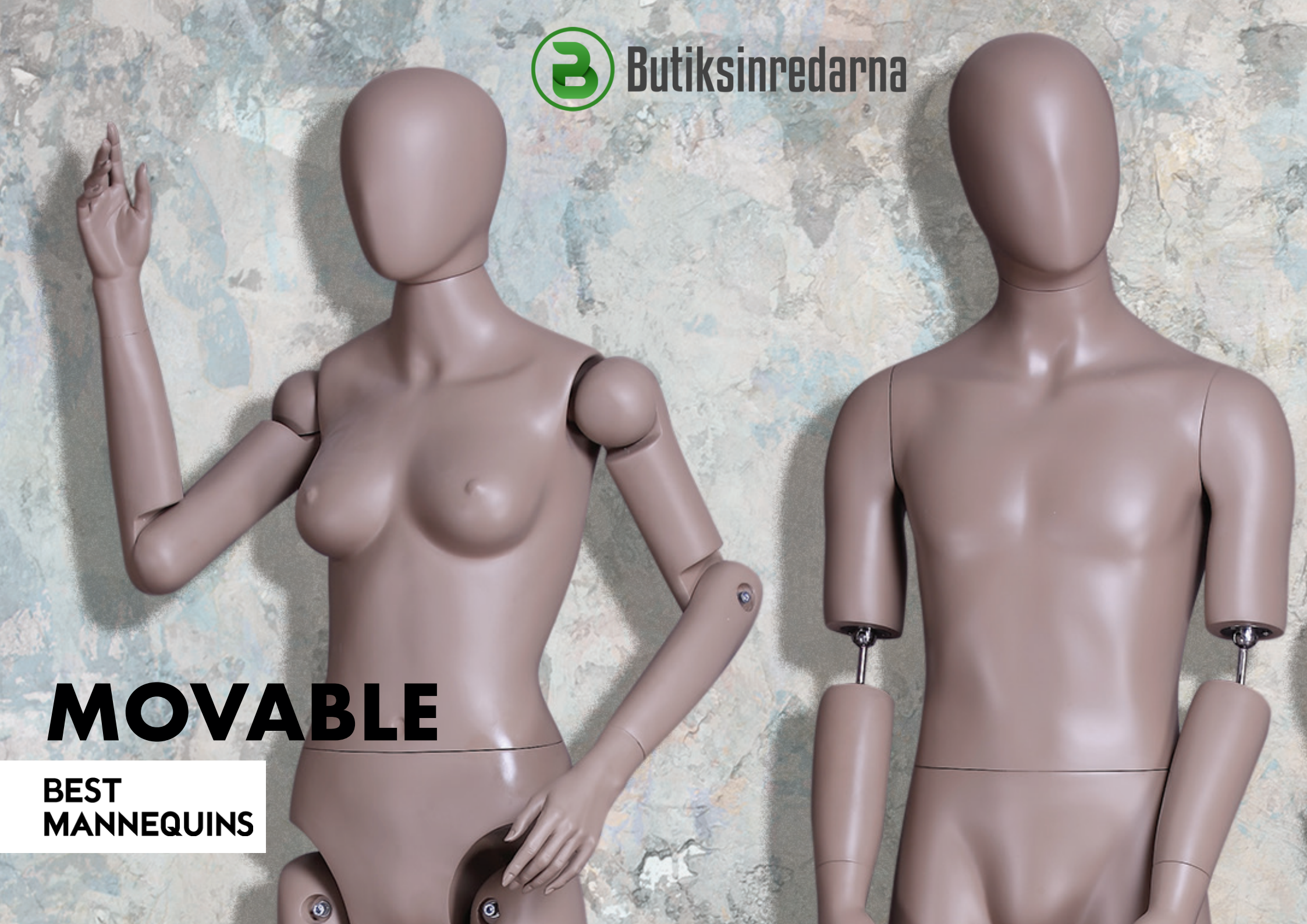




Butiksinredarna

MOVABLE

**BEST
MANNEQUINS**





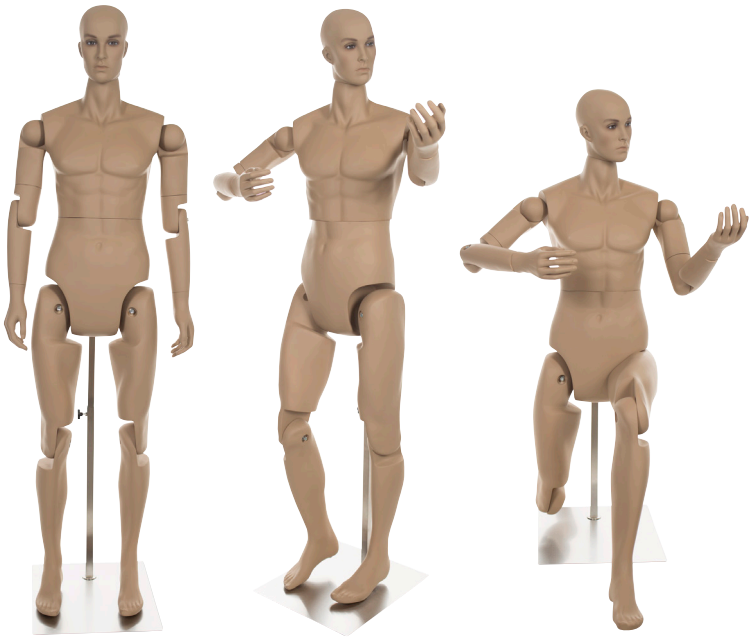
OUR DNA

**Best Mannequins is a Belgian company established in 2005
striving to design and manufacture affordable visual
merchandising products for the global fashion and retail industry.**

Agent for Scandinavia is Endito AB - Butiksinredarna

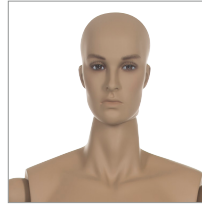
With a clear focus on innovation and quality, we have continued to expand our expertise step by step and proudly boast a portfolio of own brand collections. Short deadlines are never a problem thanks to our large stock and excellent aftersales service.

Inspiring our customers is our trademark which makes our creative team the beating heart at Best Mannequins. Their mission is to scout international trends in the fashion industry and to ensure our collections are always one step ahead in the market.

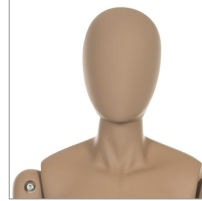


CHOICE OF HEADS

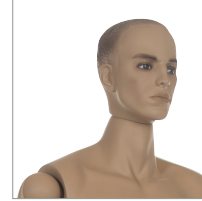
MH300



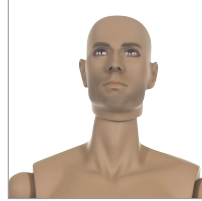
MH301



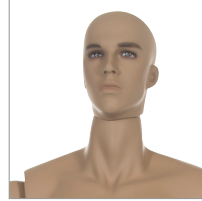
MH306



MH307



MH320



YM30_SK+MH - € 575

MEASUREMENTS

height 187/202 cm
shoulders 48 cm
chest 94 cm
waist 72 cm
hips 100 cm

QUALITY

- fibre-reinforced polyester, sprayed in EU skin color matt

BASE

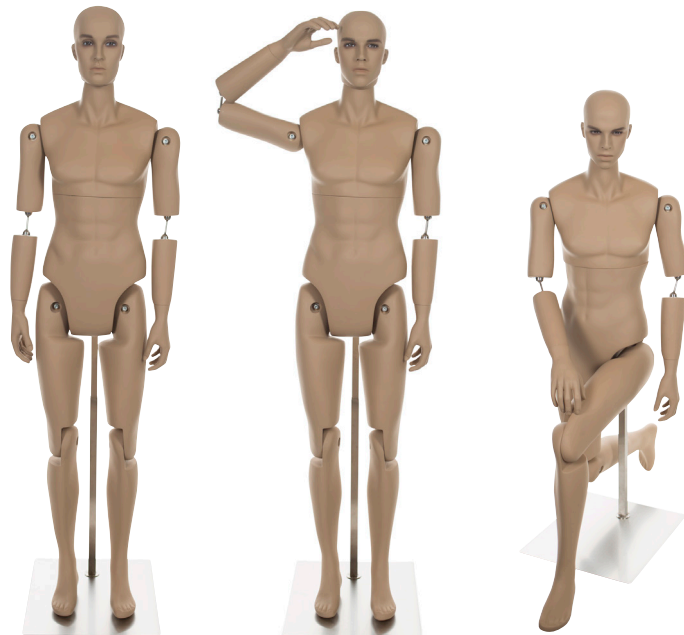
- rectangular base in brushed stainless steel
- backpin fixation

FEATURES

- removable head
- 360° movable head and arms
- thermoformed plastic hands
- adjustable torso height
- removable toe part (MH300, 301 & 307)

CUSTOMIZATION

- 1 head of your choice included



CHOICE OF HEADS

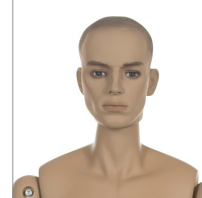
MH300



MH301



MH306



MH307



MH320



YM32_SK+MH - € 575

MEASUREMENTS

height 173/188 cm
shoulders 45 cm
chest 88 cm
waist 69 cm
hips 87 cm
footlength 20 cm

QUALITY

- fibre-reinforced polyester, sprayed in EU skin color matt

BASE

- square base in brushed stainless steel
- backpin fixation

FEATURES

- removable head
- 360° movable head and arms
- thermoformed plastic hands
- adjustable torso height
- removable toe part (MH320, 300 & 306)

CUSTOMIZATION

- 1 head of your choice included



CHOICE OF HEADS

FH305



FH304



YF31_SK+MH - € 575

MEASUREMENTS

height	177/192 cm
shoulders	40 cm
chest	88 cm
waist	61,5 cm
hips	87 cm
neck circ.	31 cm
head circ.	54 cm
innerleg	75 cm

QUALITY

- fibre-reinforced polyester, sprayed in EU skin color matt

BASE

- rectangular base in brushed stainless steel
- backpin fixation

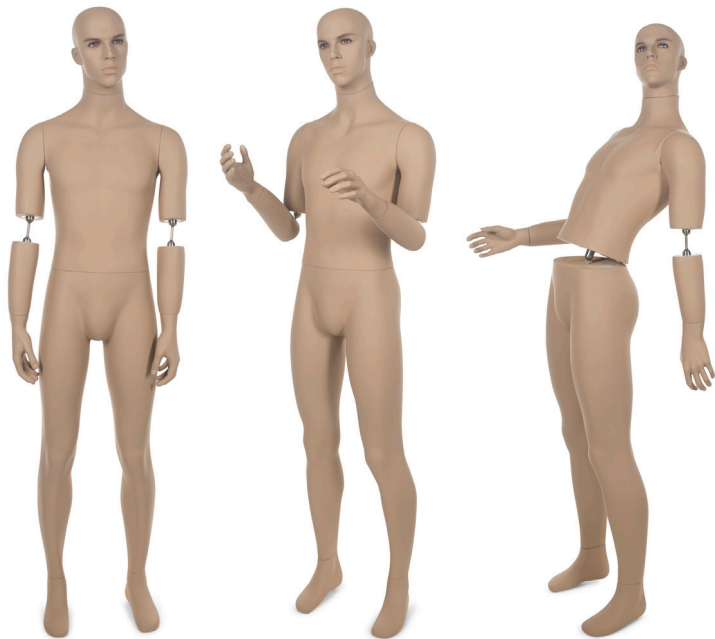
FEATURES

- removable head
- 360° movable head and arms
- thermoformed plastic hands
- adjustable torso height
- removable toe part

CUSTOMIZATION

- 1 head of your choice included





CHOICE OF HEADS

MH320



MH301



DETAILS



YM33_SK+MH - € 349

MEASUREMENTS

height	173/188 cm
shoulders	43 cm
chest	85,5 cm
waist	70 cm
hips	88 cm
foot length	20 cm
neck circ.	34 cm
head circ.	52 cm
innerleg	73 cm

QUALITY

- fibre-reinforced polyester, sprayed in EU skin color matt

BASE

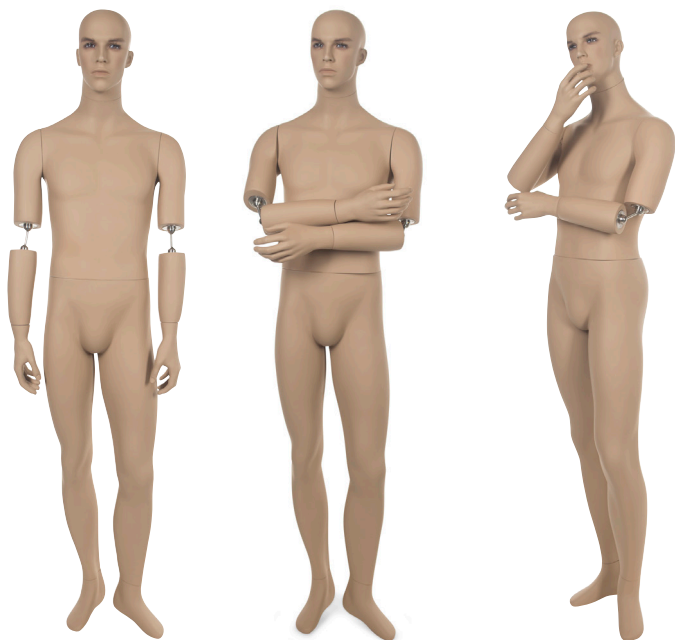
- square base in brushed stainless steel
- foot- and backpin fixation

FEATURES

- removable head and feet
- 360° movable elbow joint
- thermoformed plastic hands
- adjustable torso height

CUSTOMIZATION

- 1 head of your choice included

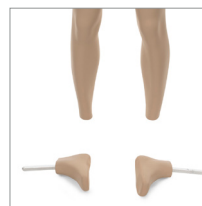


CHOICE OF HEADS

MH320



DETAILS



YM34_SK+MH - € 349

MEASUREMENTS

height	176/191 cm
shoulders	42 cm
chest	86 cm
waist	72 cm
hips	87 cm
foot length	20 cm
neck circ.	34 cm
head circ.	56 cm
innerleg	73 cm

QUALITY

- fibre-reinforced polyester, sprayed in EU skin color matt

BASE

- square base in brushed stainless steel
- foot- and backpin fixation

FEATURES

- removable head and feet
- 360° movable elbow joint
- thermoformed plastic hands
- adjustable torso height

CUSTOMIZATION

- 1 head of your choice included



CHOICE OF HEADS

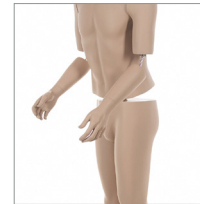
MH300



MH301



DETAILS



YM35_SK+MH - € 349

MEASUREMENTS

height 188/203 cm
shoulders 48 cm
chest 94 cm
waist 78 cm
hips 97 cm

QUALITY

- fibre-reinforced polyester, sprayed in EU skin color matt

BASE

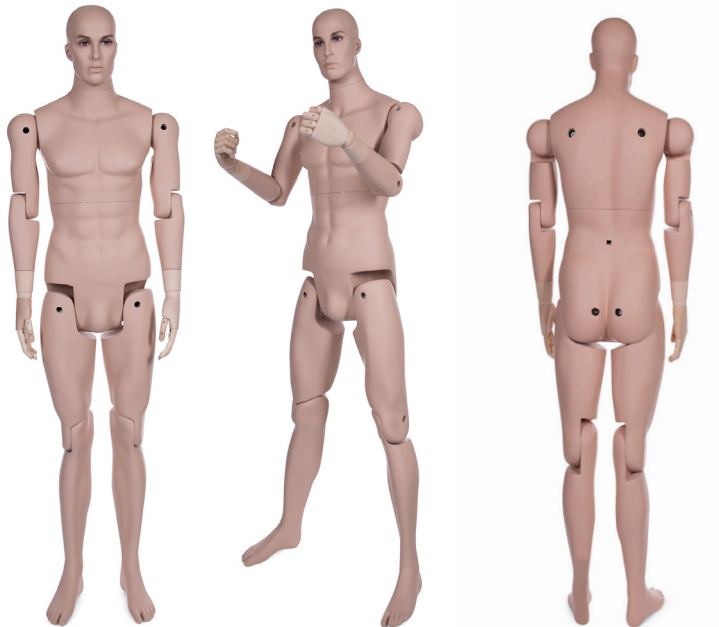
- square base in brushed stainless steel
- foot- and backpin fixation

FEATURES

- removable head and feet
- 360° movable elbow joint
- thermoformed plastic hands
- adjustable torso height

CUSTOMIZATION

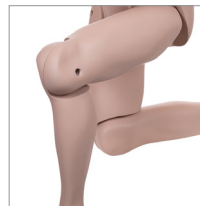
- 1 head of your choice included



CHOICE OF HEADS



DETAILS



YM40_SK+M+BH_M - € 575

MEASUREMENTS height 180 cm shoulders 57 cm
chest 100 cm waist 75 cm hips 93 cm

QUALITY

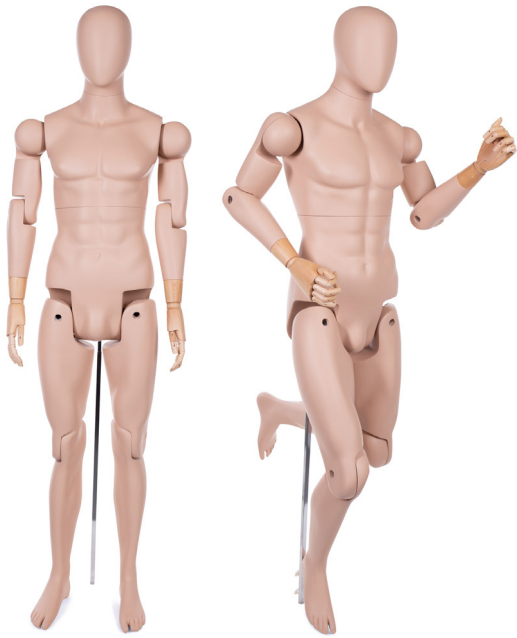
- fibre-reinforced polyester, sprayed in EU skin color matt

BASE

- rectangular base in brushed stainless steel - foot- and backpin fixation

FEATURES

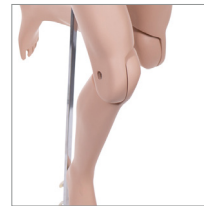
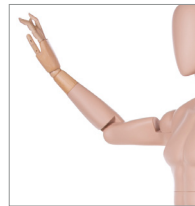
- realistic interchangeable head
- movable arm & legs
- pair of wooden articulated hands



HEAD



DETAILS



YM55_SK+MH - € 575

MEASUREMENTS

height 184 cm
shoulders 46 cm
chest 96 cm
waist 72 cm
hips 90 cm

QUALITY

- fibre-reinforced polyester, sprayed in EU skin color matt

BASE

- square base in brushed stainless steel
- calf- and backpin fixation

FEATURES

- removable abstract head
- movable arm & legs
- pair of wooden articulated hands



HEAD



DETAILS



YF50_SK+M+BH_M - € 575

MEASUREMENTS

height 179 cm
shoulders 40 cm
chest 85 cm
waist 69 cm
hips 88 cm
neck circ. 32 cm
head circ. 53 cm
innerleg 75 cm
heel height 7 cm

QUALITY

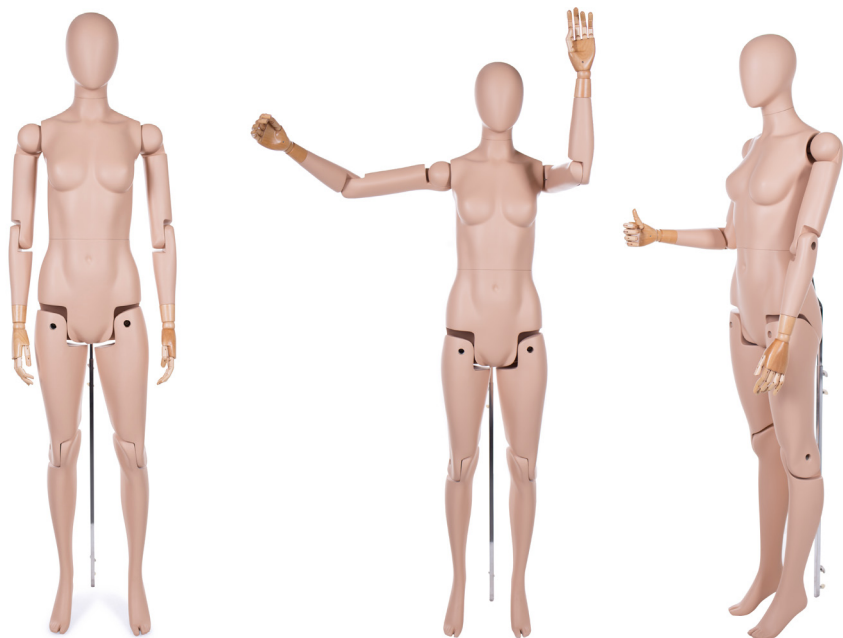
- fibre-reinforced polyester, sprayed in EU skin color matt

BASE

- square base in brushed stainless steel
- foot-, calf- and backpin fixation

FEATURES

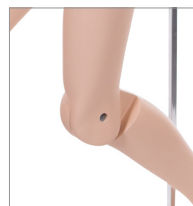
- removable head
- movable arm & legs
- pair of wooden articulated hands



HEAD



DETAILS



YF65_SK_M - € 575

MEASUREMENTS

height 183 cm
shoulders 36 cm
chest 84 cm
waist 65 cm
hips 84 cm
head circ. 54,5 cm
innerleg 78 cm
heel height 6 cm

QUALITY

- fibre-reinforced polyester, sprayed in EU skin color matt

BASE

- square base in brushed stainless steel
- foot-, calf- and backpin fixation

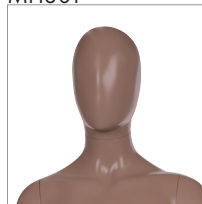
FEATURES

- removable abstract head
- movable arm & legs
- pair of wooden articulated hands

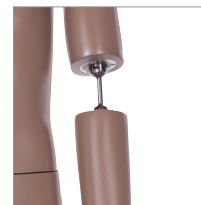


HEAD

MH301



DETAILS



YM33_SK+MH - € 349

MEASUREMENTS

height 173/188 cm
shoulders 43 cm
chest 85,5 cm
waist 70 cm
hips 88 cm
footlength 20 cm

QUALITY

- fibre-reinforced polyester, sprayed in tanned skin color

BASE

- square base in brushed stainless steel
- foot-, calf- and backpin fixation

FEATURES

- 360° rotational elbow joint
- removable head
- removable feet : small size feet with screw underneath to improve stability when free standing

HEAD

- Only MH 301 available

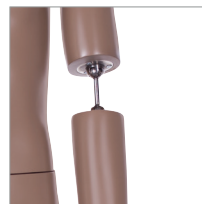


CHOICE OF HEADS

MH300



DETAILS



YM34_SK+MH - € 349

MEASUREMENTS

height 176/191 cm
shoulders 42 cm
chest 86 cm
waist 72 cm
hips 87 cm
footlength 20 cm

QUALITY

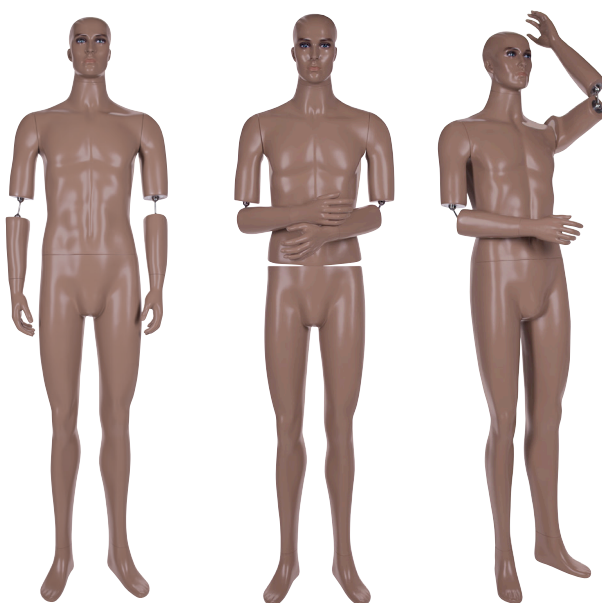
- fibre-reinforced polyester, sprayed in tanned skin color

BASE

- square base in brushed stainless steel
- foot-, calf- and backpin fixation

FEATURES

- 360° rotational elbow joint
- removable head
- removable feet : small size feet with screw underneath to improve stability when free standing

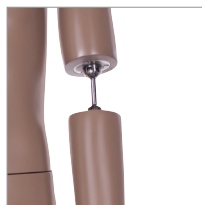


CHOICE OF HEADS

MH300



DETAILS



YM35_SK+MH - € 349

MEASUREMENTS

height 188/203 cm
shoulders 48 cm
chest 94 cm
waist 78 cm
hips 97 cm

QUALITY

- fibre-reinforced polyester, sprayed in tanned skin color

BASE

- square base in brushed stainless steel
- foot-, calf- and backpin fixation

FEATURES

- 360° rotational elbow joint
- removable head
- removable feet : small size feet with screw underneath to improve stability when free standing

REMARK

only a few left with a glossy finish



YM41_WH_M - € 575

MEASUREMENTS

height 190 cm
shoulders 56 cm
chest 105 cm
waist 80 cm
hips 104 cm

QUALITY

- fibre reinforced polyester sprayed in white color matt

BASE

- rectangular base in brushed stainless steel
- foot- and back fixation

FEATURES

- movable leg and arm joints



YF51_WH_M - € 575

MEASUREMENTS

height 184 cm
shoulders 37 cm
chest 84 cm
waist 66 cm
hips 93 cm

QUALITY

- fibre reinforced polyester sprayed in white color matt

BASE

- rectangular base in brushed stainless steel
- foot- and back fixation

FEATURES

- movable leg and arm joints



TRADE BENEFITS AT A GLANCE

With a passion for retail, it is our mission to create impressive solutions that boost your sales. Our designs are elegant, creative and well-thought.



PREMIUM SERVICE

At Best Mannequins, you can count on a straightforward, personal and above all service-oriented approach.



LARGE STOCK

95% of the collections offered in our online shop are available in stock. So most products can be picked up or shipped immediately upon ordering.



3D CUSTOM-MADE DESIGN

Best Mannequins has its in-house 3D SCAN & PRINT studio. Our experienced 3D sculptor will be glad to transform your ideas into 3D visuals. Custom-made prototyping is now faster than ever before.



QUALITY AND RELIABILITY

At Best Mannequins there is a constant research for innovative and practical solutions which improve the functionality and durability of our products. We pioneer to offer you the most advanced fittings and best coatings on the market. Thanks to a rigorous quality control process, we achieve to guarantee you a consistent quality.

Our sourcing knowhow allows us to produce at the most cost-efficient way so you can rely on us as a partner offering you the BEST quality/price ratio on the market.



GRAND SHOWROOM

Get inspired in our grand showroom of 1500m². This is where our collections are brought to life.



WORLDWIDE SHIPMENT

Wherever your business or project is located on the globe, our logistic experts make sure your orders are delivered smoothly and without delays.



EXCELLENT RENOVATION & RESPRAY SERVICE

In our in-house workshop, we offer you quality refurbishment and repairs of display mannequins, forms and metal displays. For an affordable price, a professional respray service is offered: colour match your existing mannequins or transform your mannequins by having them painted in any RAL colour.



SUSTAINABILITY

Best Mannequins is actively taking steps to implement innovative production solutions which reduce the impact on the environment and/or improve the working conditions in its factories. Instead of the conventional fibre reinforced polyester, we stimulate several more planet friendly raw materials such as bio-resin and recyclable plastics. To boost the longevity of our products, we offer you an excellent respray and repair service at affordable cost.

**BEST
MANNEQUINS**



Endito AB

Telefon 08-611 02 45

info@butiksinredarna.se

www.butiksinredarna.se

www.skyltdockor.se