



I M P R E S S

**BEST MANNEQUINS**



*DRESS TO*  
**IMPRESS**







Inspired by the idea of ultra-femininity in a world of luxury fashion, the unique collection **IMPRESS** is the outcome.

A collection which consists of female high fashion poses reflecting women of the "beau monde" dress to impress.

The extended limbs and neck, gentle body curves and perfected dimensions, all underline the pure beauty and stylish elegance of your premium collections. In display these contemporary and self-confident mannequins make people indirectly wonder and admire.

Expand your visual merchandising options further by the use of the accessories hook in the handpalm or book a customized make-up finish.





# IMPRESS

The Impress collection comes standard in a silky white finish. The closed eyes of the stylized head add both attitude and elegance.

All anatomic measurements below were thoughtfully brought together in order to bring the best out of your collections.

---

## GENERAL SIZES

---

	FEMALE		MALE	
height	180	cm	194	cm
shoulders	36	cm	45	cm
chest	86	cm	97	cm
waist	62	cm	77	cm
hips	89	cm	97	cm
heel	10	cm	1	cm
clothes	36	EU	48	EU
shoes	40	EU	43	EU









IMPF01\_WH

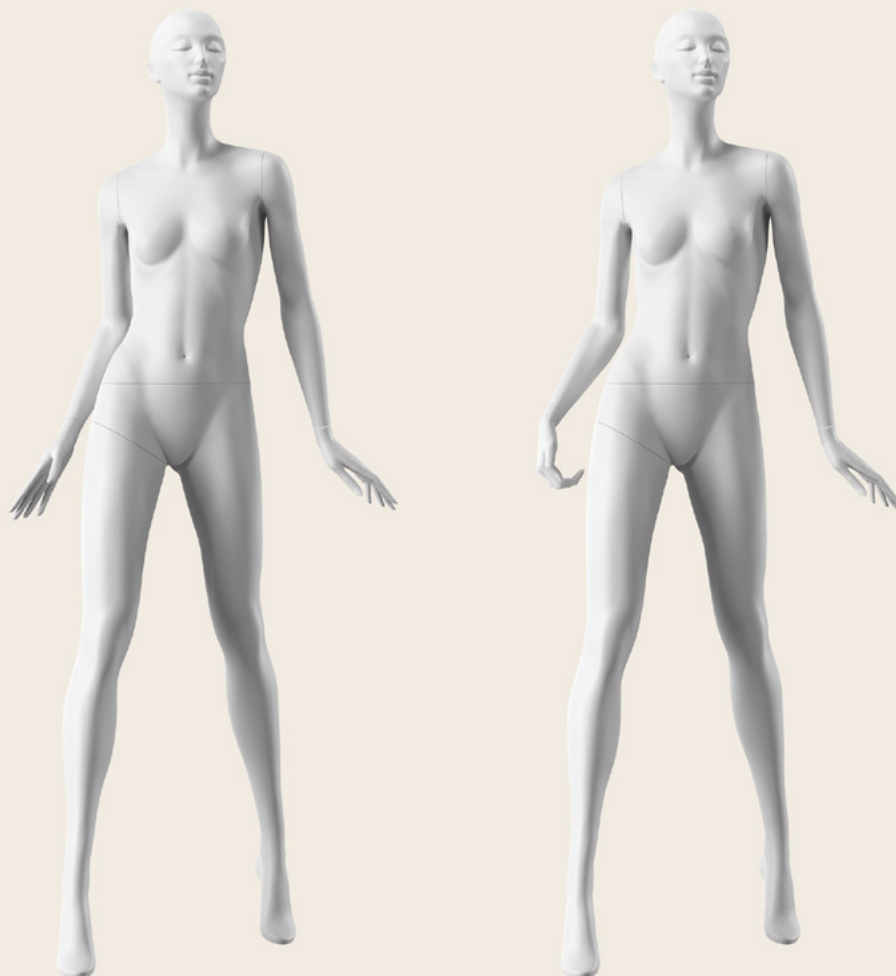
---

height: 183 cm  
width: 42 cm  
depth: 40 cm

price: € 395 excl. VAT







## EXTRA ARM

This pose is offered with an extra right arm for more versatility in display options.

### IMPF02\_WH

---

height:	190 cm
width:	76 cm
depth:	45 cm

price:	€ 425 excl. VAT
--------	-----------------





IMPF03\_WH

height: 191 cm  
width: 88 cm  
depth: 44 cm

price: € 395 excl. VAT



IMPF04\_WH\*

height: 186 cm  
width: 107 cm  
depth: 40 cm

price: € 395 excl. VAT

\*only available upon minimum order













---

IMPF05\_WH

height: 190 cm  
width: 45 cm  
depth: 24 cm

price: € 395 excl. VAT



---

IMPF06\_WH

height: 187 cm  
width: 77 cm  
depth: 48 cm

price: € 395 excl. VAT





## PERFECTION TOGETHER

The artists of our development team have a boundless strive towards perfection. At the same time, dreaming of the unreachable perfection with their head and sculpting it with their hands. You create vanguard and pioneering fashion designs. We are mannequin artists that share the same artistic thoughts and speak your language. There is no way that shows higher respect towards an artist, than by displaying the products he created in the best possible way. By understanding each other and bundling forces, we can bring the best out of your collections. And maybe one day, we might *reach the unreachable.*



















Boundless potential...







IMPF07\_WH

---

height: 189 cm  
width: 52 cm  
depth: 33 cm

price: € 395 excl. VAT



IMPF08\_WH

---

height: 189 cm  
width: 47 cm  
depth: 27 cm

price: € 395 excl. VAT









IMPF09\_WH

---

height: 147 cm  
width: 90 cm  
depth: 52 cm

price: € 395 excl. VAT



IMPF10\_WH

---

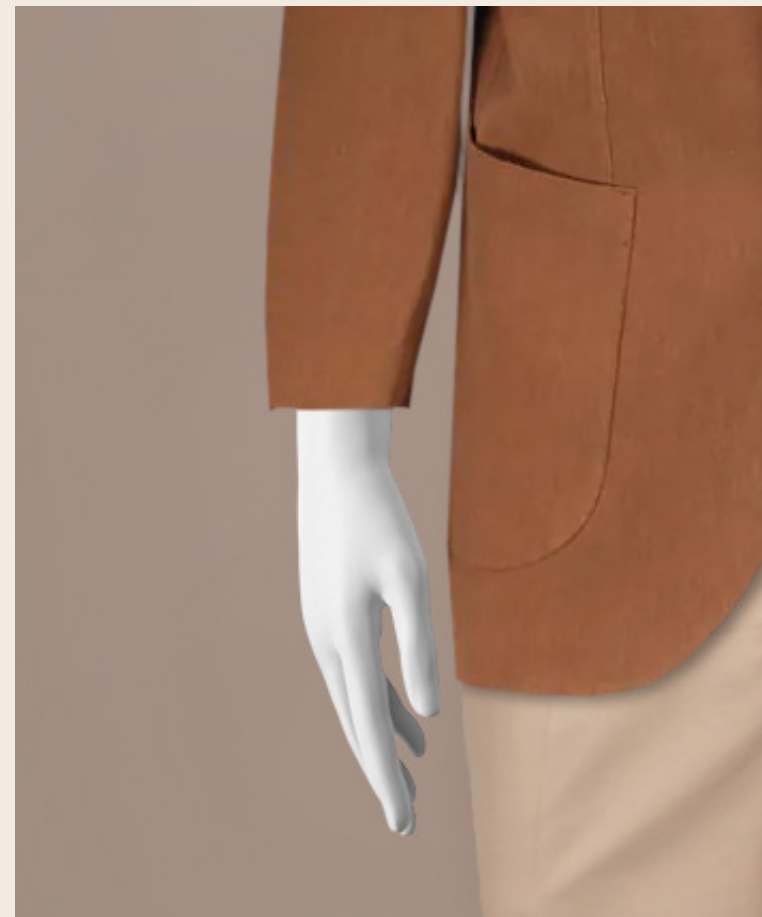
height: 180 cm  
width: 65 cm  
depth: 75 cm

price: € 395 excl. VAT









The perfect fit  
for men...





---

**IMPM30\_WH**

height: 194 cm  
width: 52 cm  
depth: 30 cm

price: € 395 excl. VAT



---

**IMPM31\_WH\***

height: 194 cm  
width: 52 cm  
depth: 28 cm

price: € 395 excl. VAT

\*only available upon minimum order





---

## BOUNDLESS POTENTIAL

---

Adding make-up, eyelashes, lipstick, freckles, ... in combination with your desired body colour enable you to stimulate all senses of your vogueish collections.

Customize the base and top your display by adding complementary accessories via the handaccessories pin. All of these options contribute towards boundless Visual Merchandising potential of your window mannequins.

---

## CUSTOM BODY COLOUR

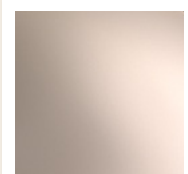
---



**STANDARD**  
SILKY WHITE



**RESPRAY**  
NUDE



**RESPRAY**  
EVENING GLOW

or any other RAL colour





Fabulous  
makeup...



Pure elegance...

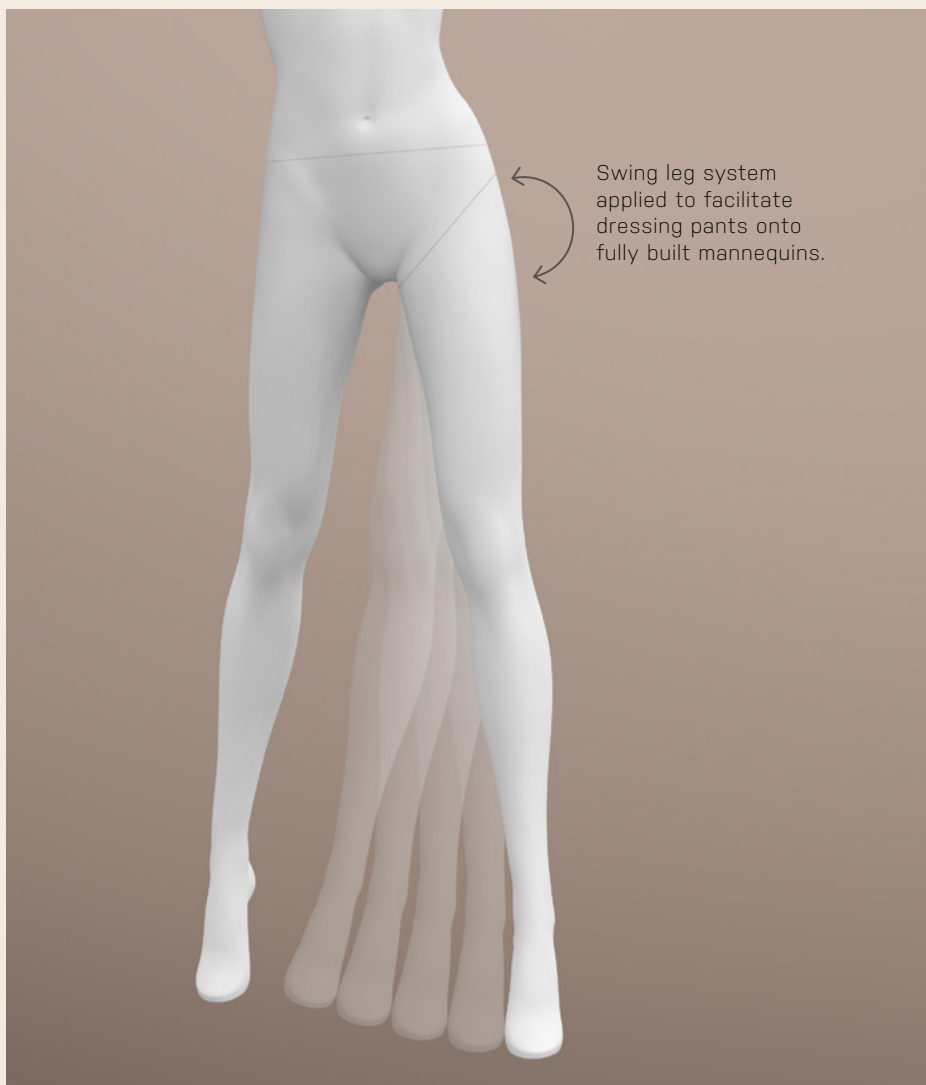




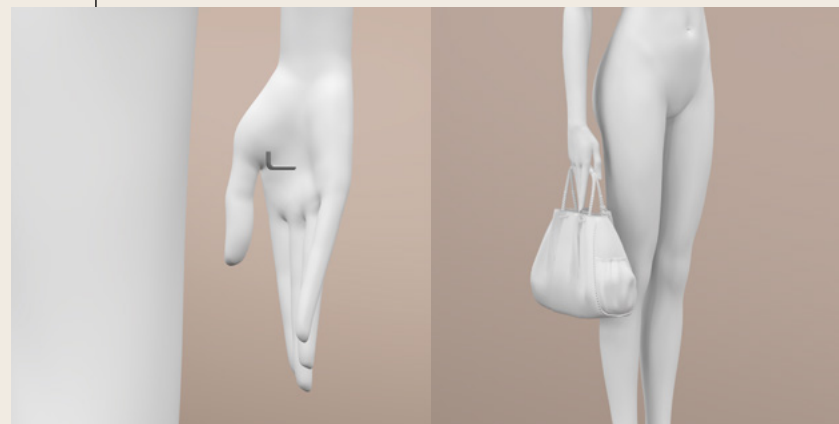
---

## INCLUDED ACCESSORIES

---



All compatible models include a hand accessories pin.



Round tempered glass base with foot and calf pin included.





# *Trade benefits at a glance*



## **PREMIUM SERVICE**

At Best Mannequins, you can count on a straightforward, personal and above all service-oriented approach.



## **LARGE STOCK**

95% of the collections offered in our online shop are available in stock. So most products can be picked up or shipped immediately upon ordering.



## **3D CUSTOM-MADE DESIGN**

Best Mannequins has its in-house 3D SCAN & PRINT studio. Our experienced 3D sculptor will be glad to transform your ideas into 3D visuals. Custom-made prototyping is now faster than ever before.



## **QUALITY AND RELIABILITY**

At Best Mannequins there is a constant research for innovative and practical solutions which improve the functionality and durability of our products. We pioneer to offer you the most advanced fittings and best coatings on the market. Thanks to a rigorous quality control process, we achieve to guarantee you a consistent quality. Our sourcing knowhow allows us to produce at the most cost-efficient way so you can rely on us as a partner offering you the BEST quality/price ratio on the market.



## **GRAND SHOWROOM**

Get inspired in our grand showroom of 1500m<sup>2</sup>. This is where our collections are brought to life.



## **WORLDWIDE SHIPMENT**

Wherever your business or project is located on the globe, our logistic experts make sure your orders are delivered smoothly and without delays.



## **EXCELLENT SERVICE**

In our in-house workshop, we offer you quality refurbishment and repairs of display mannequins, forms and metal displays. For an affordable price, a professional respray service is offered.



## **SUSTAINABILITY**

Best Mannequins is actively taking steps to implement innovative production solutions which reduce the impact on the environment and/or improve the working conditions in its factories. Instead of the conventional fiber reinforced polyester, we stimulate several more planet friendly raw materials such as bio-resin and recyclable plastics. Our showroom is carbon neutral and we are constantly working on more sustainable solutions such as our respray and repair service to boost the longevity of our products.







**Endito AB**

Telefon: 08-611 02 45

[info@butiksinredarna.se](mailto:info@butiksinredarna.se)

[www.butiksinredarna.se](http://www.butiksinredarna.se)

[www.skyltdockor.se](http://www.skyltdockor.se)